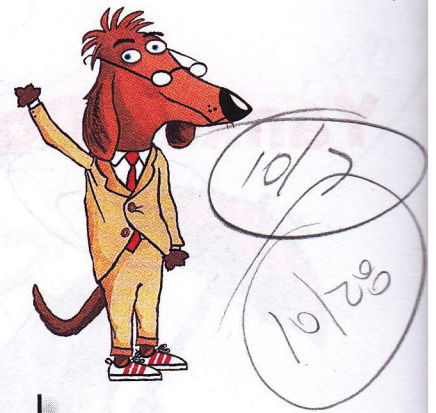
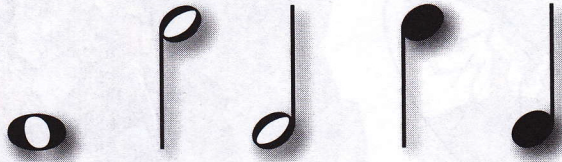


Getting Acquainted with Music Notation



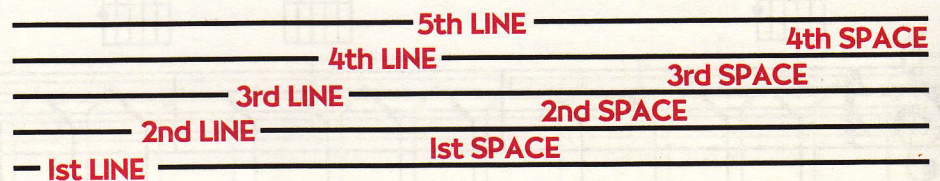
Notes

Musical sounds are represented by symbols called *notes*. Their time value is determined by their color (black or white), and by stems and flags attached to them.



The Staff

Each note has a name. That name depends on where the note is found on the *staff*. The staff is made up of five horizontal lines and the spaces between those lines.



The Music Alphabet

The notes are named after the first seven letters of the alphabet (A-G).



Clefs

As music notation progressed through history, the staff had from two to twenty lines, and symbols were invented that would always give you a reference point for all the other notes. These symbols were called *clefs*.

Music for the guitar is written in the *G* or *treble clef*. Originally, the Gothic letter G was used on a four-line staff to show the pitch G.



This developed into the modern clef:

